



Security Barriers

This report summarizes security barriers using Evergreen units as developed over the years. Such security barriers are made according to a wide variation of requirements and specifications, depending on the specific needs for each project.

Security Barriers

- 1. Plantable Medium Barriers**
- 2. Safety Planters**
- 3. Heavy Duty Security Wall**

1. Plantable Medium Barriers

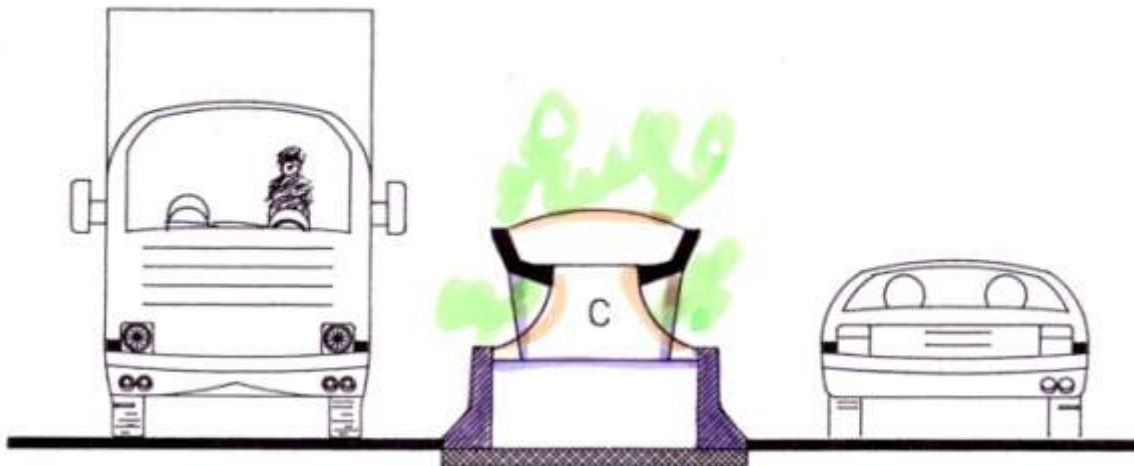
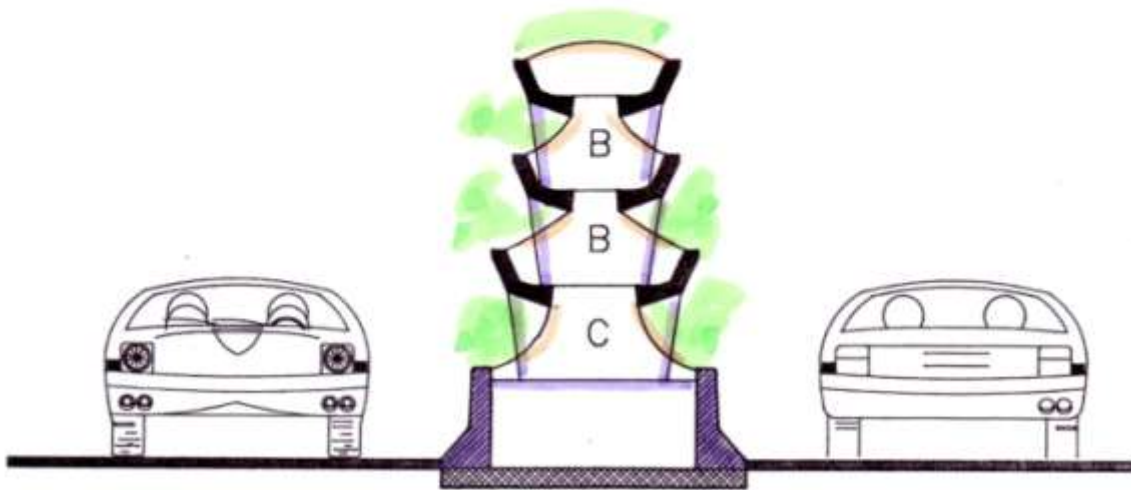
- **New Jersey type medium barrier**
- **Evergreen units for planting**
- **Protection for anti glare (night traffic)**



Medium Barriers

Along highways and to prevent Bomb Trucks from intruding Public Buildings

MEDIUM SAFETY BARRIERS
ANTI – BLENDSCHUTZ

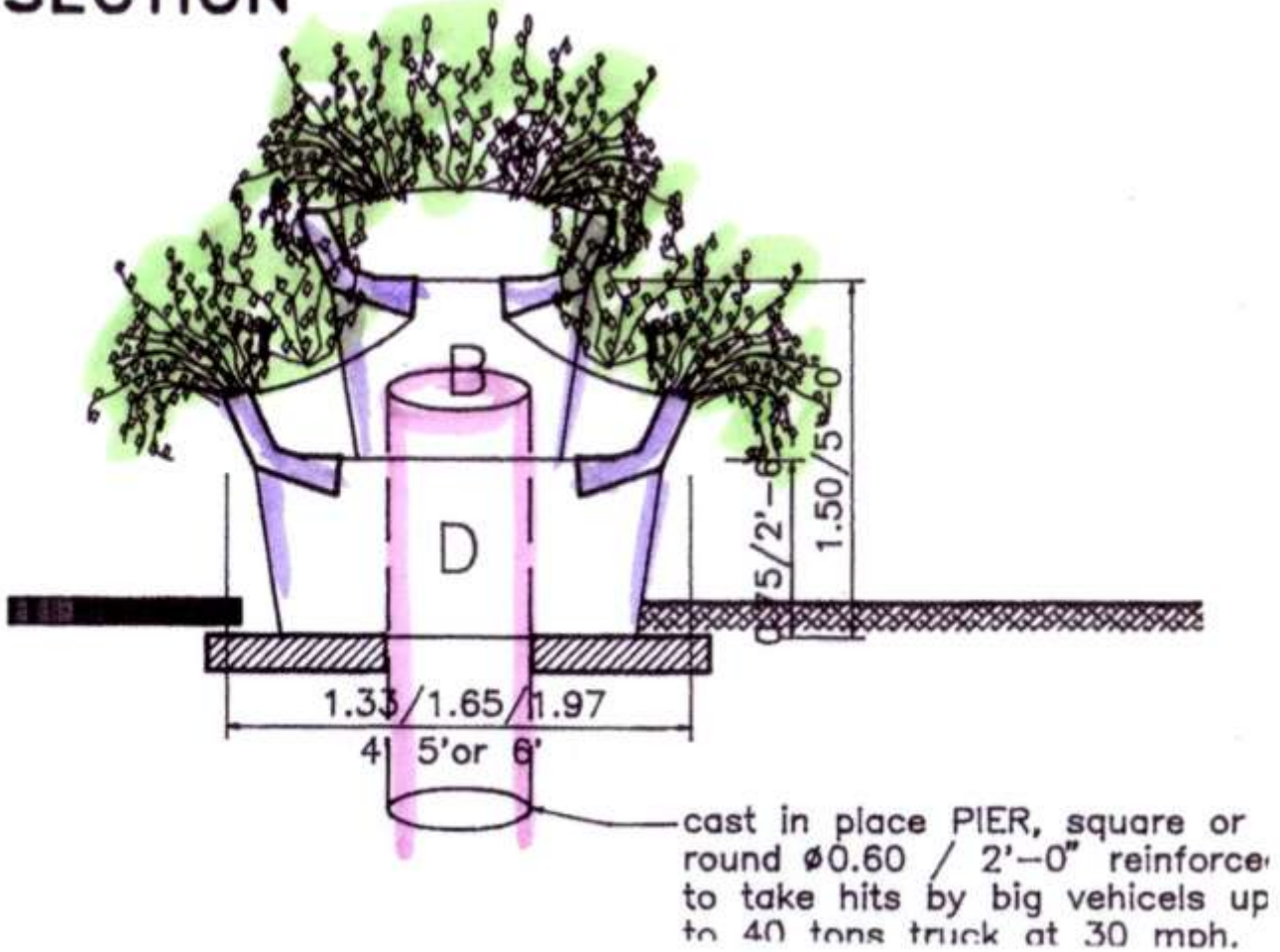




Evergreen Safety Planters

For use around Public Buildings to prevent vehicles intruding. No New Jersey barrier, yet internal, non visible strengthening by large diameter drilled piers penetrating into the sub ground, to withstand even fast running truck impact.

SECTION



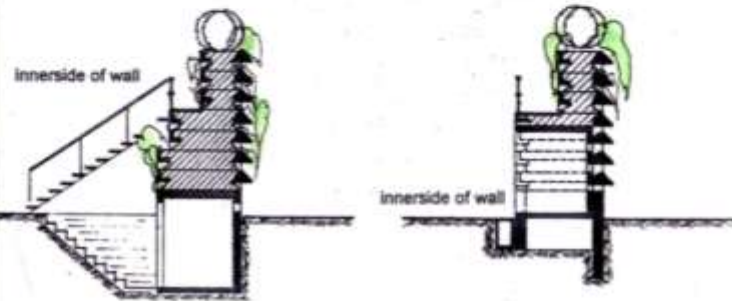
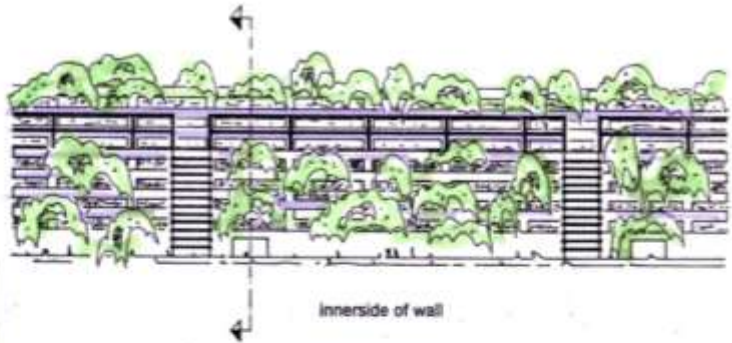


Evergreen Vegetated Heavy Duty Safety Walls



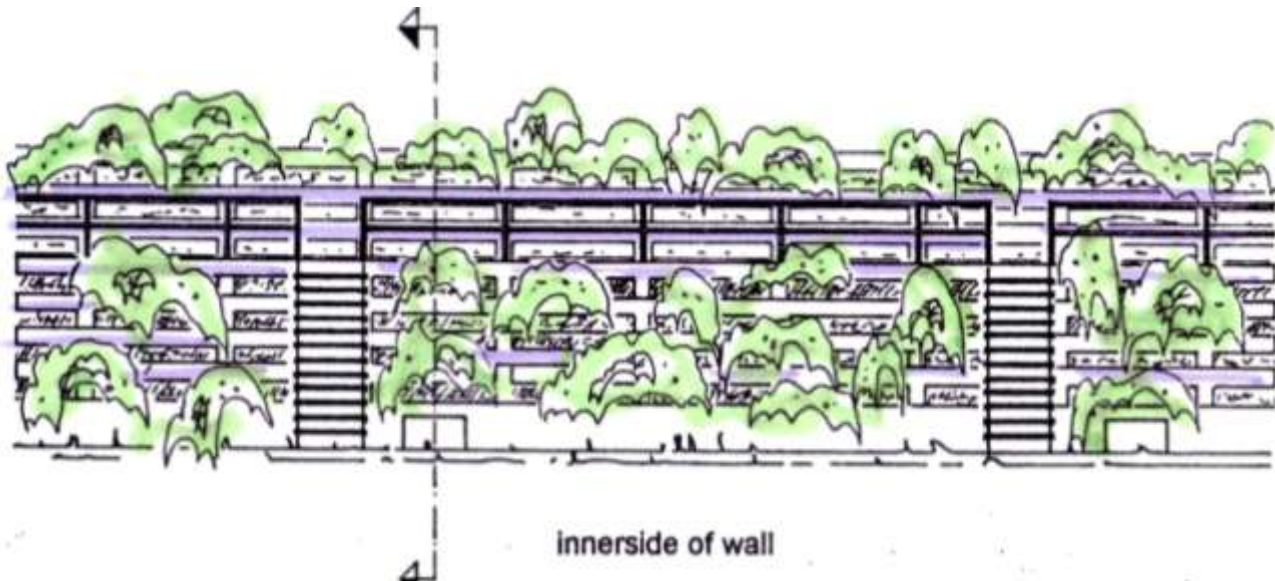
EVERGREEN SECURITY WALL
for special protected projects, powerplants etc.

(impossible to climb wall from the outside)
(constructed in Germany 1985)



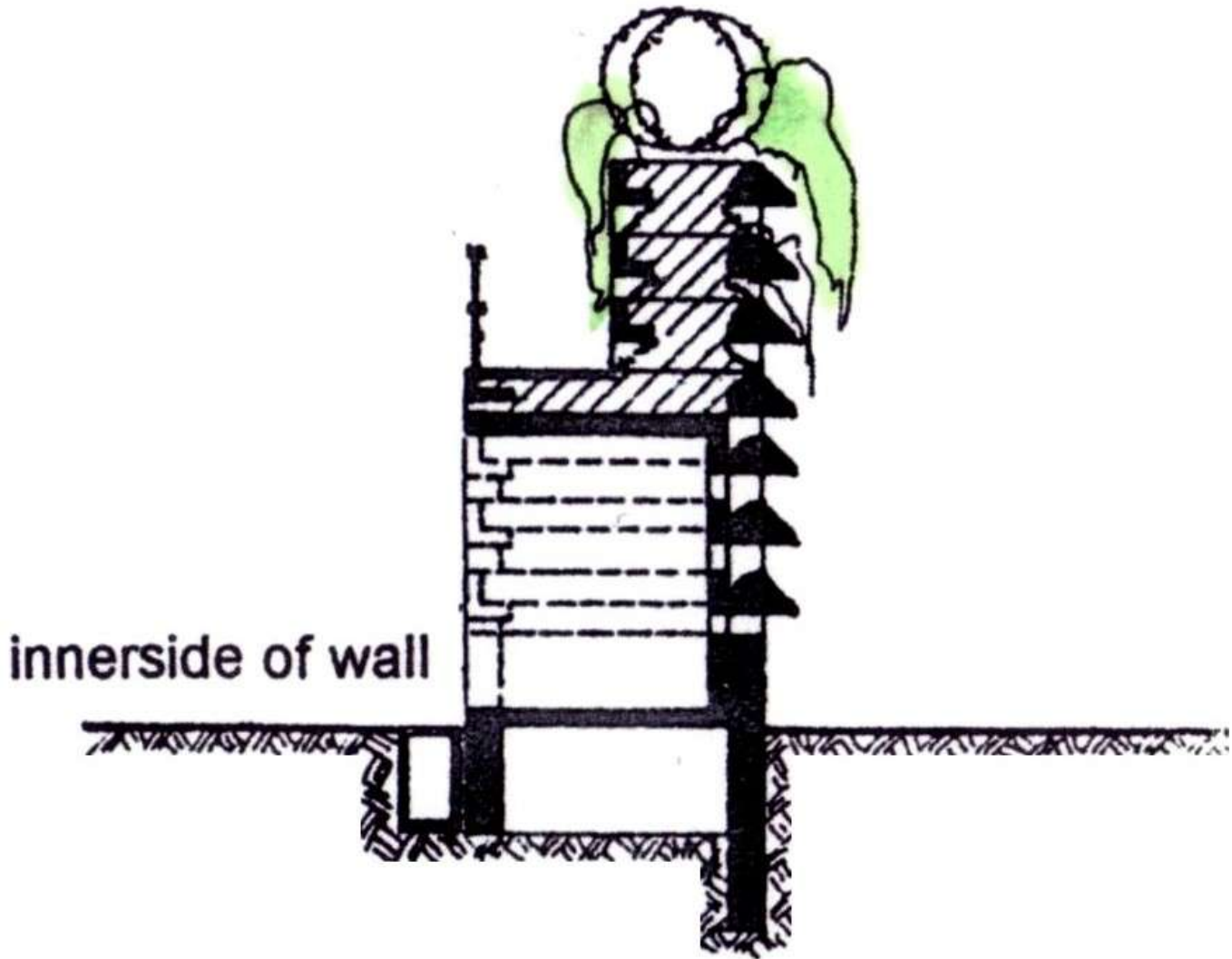
Special Features:

No Prison Look, instead Excellent Appearance,





Non Climb – Protected Observation Path



2. Evergreen Safety Planters

- non climb, plantable, barbed wire top
- protected observation path
- camera and observation shelters



Non Climb Capacity Tested:

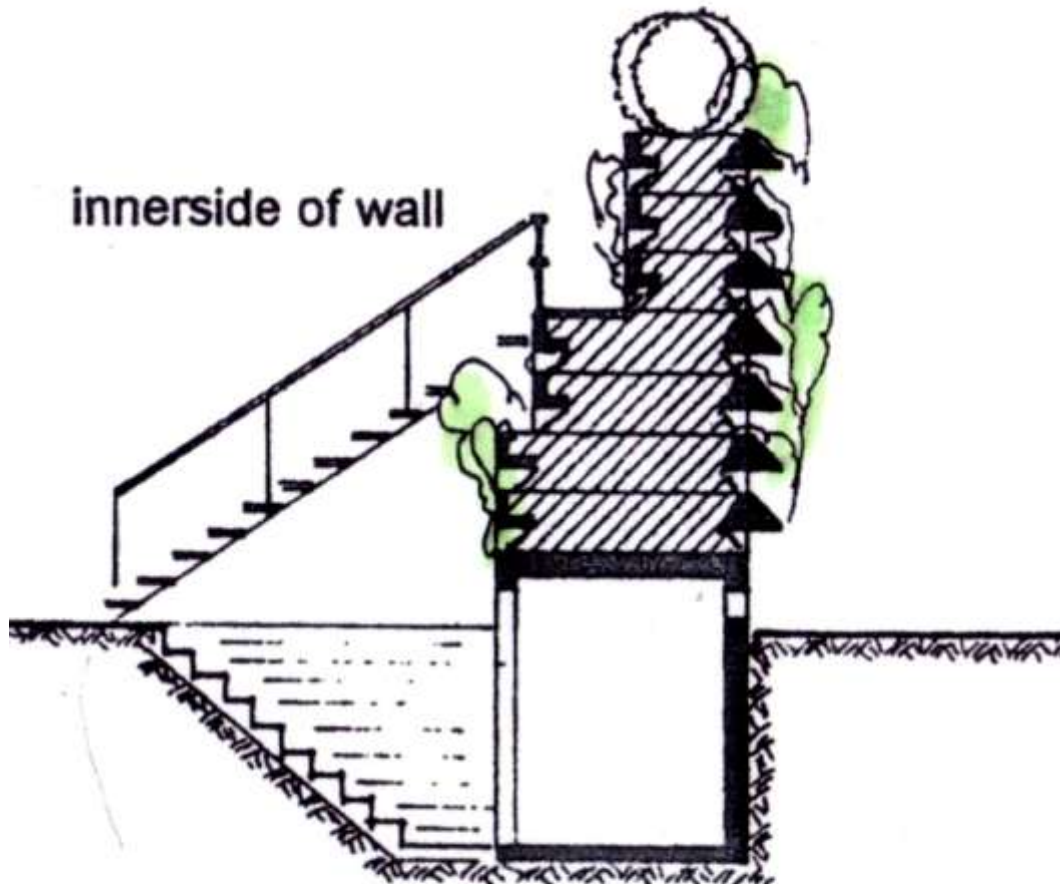
3. Heavy Duty Security Wall

- non-climb, thorny plants covered, barbed wire on top
- protected observation path behind top
- camera posts and observation shelters.





Service Access for Observation and Defense



3. Heavy Duty Security Wall

- non-climb, thorny plants covered, barbed wire on top
- protected observation path behind top
- camera posts and observation shelters.



List of Special Features - Select as needed for each project

EVERGREEN

SECURITY WALL

Against terrorists, invader and demonstrators for:

- high priority public buildings,
- military targets, and
- **nuclear power plants.**

Special Specifications

(to chose from by marking 'X')

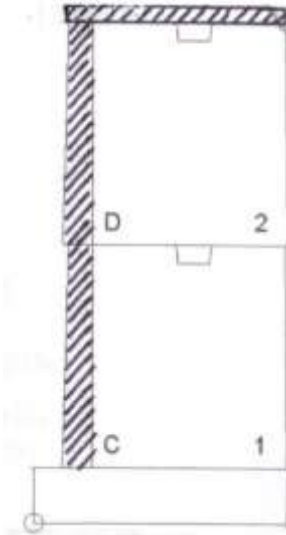
1	Looks good	pleasingly integrated in environment
2	Thorny bushes	protects better than barbed wire up on top
4	Attractive	wall resets for planting shrubs at various levels
5	Safe	not possible to climb
6	Observation Posts	posts and see through slots for sentinel
7	Non visible walkway	for protecting forces on inner side
8	Water jets	non visible water jets mounted on inside and on top of the wall
9	Alarm system	built in alarm system
10	Television	built in closed circuit television observation system
11	Night safe	built in flood lights
12	Low maintenance	built in irrigation system
13	Sound absorbing	traffic noise reflection not acceptable, noise absorption
14	Flexible alignment	alignment can follow given border lines, curbs, or bends
15	Accident safe	withstanding a horizontal load of a 40 tons truck at 30 mph
16	Accident safe	withstanding a horizontal load of a 20 ton truck at 15mph
17	Attack safe	withstands up to 100 tons load at 2 feet above road level
18	Attack safe	withstanding a 25 t horizontal live load, 2 ft above ground
19	Defense road	defense control access road along inner side
20	Observation posts	observation posts heated for use in winter time
21	Tunneling proof	penetration safe for tunnels less than 5 feet deep.



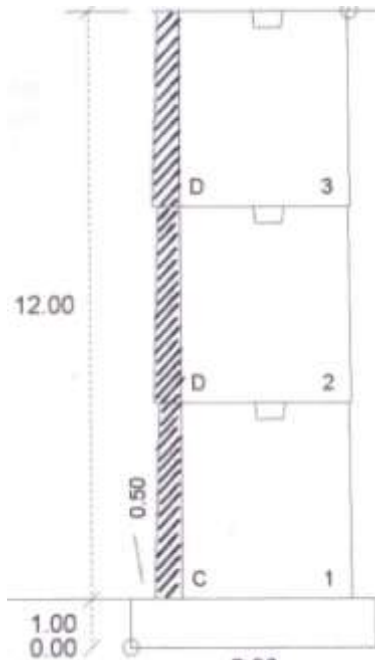
Everwall Units - Non Vegetated Security Barrier

Use standard Everwall units with non vegetated facing. Options:

A. Standard Everwall units



Short Everwall

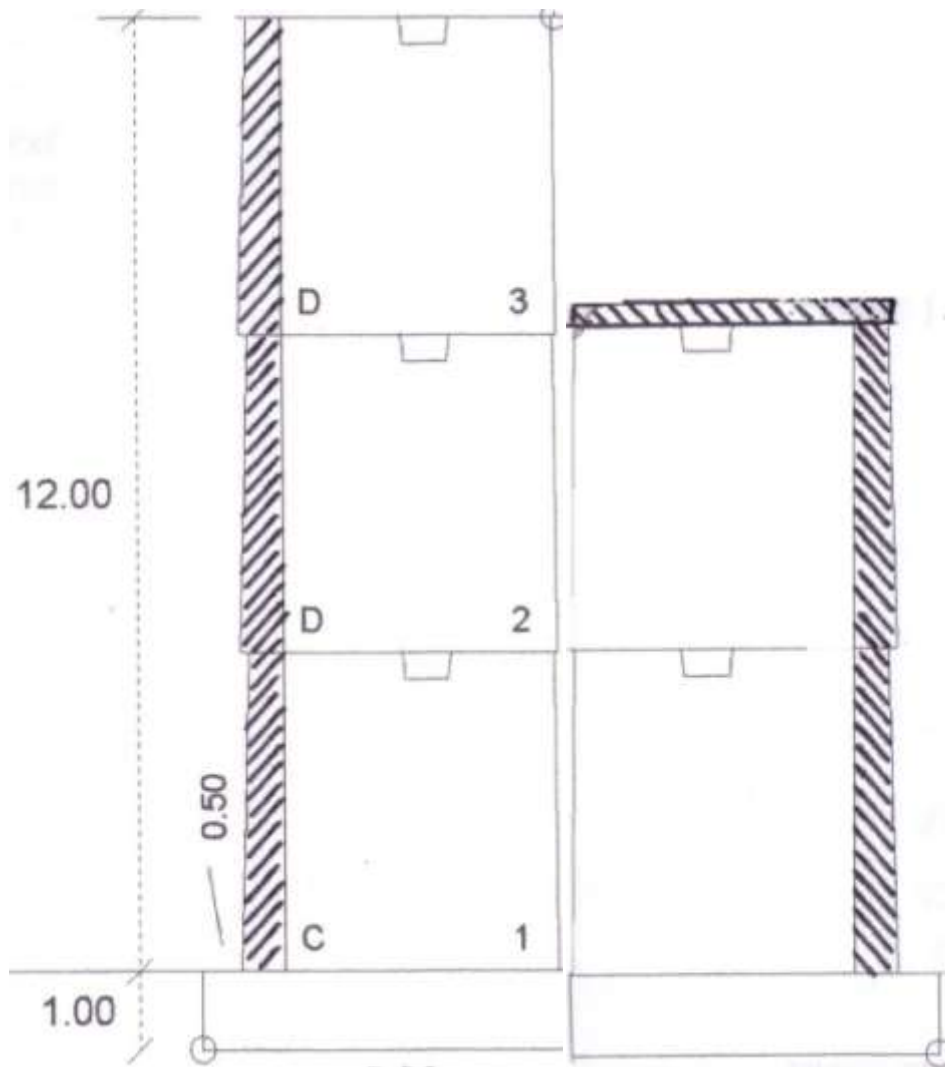


12 ft. high Everwall

Barrier erected on gravel foundation only. Units empty or filled with lean concrete for more weight, depending on weight and resistance required. Removable wall for dislocation.



B. Standard units Back to Back for Observation Path



Everwall units Back to Back

- Units empty or filled with gravel, depending on required impact resistance.
- Wall is removable for dislocation or reuse elsewhere.
- Foundation on a simple gravel bed.
- Narrow units for both front and lower stack,
- Erected back to back for observation path.



Summary

Security Barriers

Selection

EVERGREEN

Security Barriers

1. Plantable Medium Barriers
2. Safety Planters
3. Heavy Duty Security Wall

1. Plantable Medium Barriers

- New Jersey type medium barrier
- Evergreen units for planting
- Protection for anti glare (night traffic)

2. Evergreen Safety Planters

- non climb, plantable, barbed wire top
- protected observation path
- camera and observation shelters

3. Heavy Duty Security Wall

- non-climb, thorny plants covered, barbed wire on top
- protected observation path behind top
- camera posts and observation shelters.